



Introduction to Career Clusters



Career Cluster Framework

What are Career Clusters?

In our economy, there are hundreds of occupations and numerous ways of grouping them. The classification system most commonly used in schools and state agencies is the National Career Clusters Framework. This framework groups occupations into sixteen different clusters based on similarities in foundational knowledge and skills needed to achieve career success. The core academic and technical competencies that define each cluster provide the foundation on which students develop more advanced, industry-specific skills.

Detailed descriptions of the knowledge and skills associated with each cluster can be found at: <https://careertech.org/career-clusters>

The benefit of using the National Career Clusters Framework is that occupations are grouped on the basis of shared educational and training requirements. This allows for a more direct link to be established between educational practices and careers. Curriculum and programs of study can be developed that incorporate foundational skills that are essential to success in specific fields. Furthermore, clear pathways can be established that can guide students in selecting programs of study that will support their employment goals.

16 Career Clusters



What are Career Pathways?

Within each cluster, pathways have been identified that focus on smaller subsets of related occupations. Career pathways have their own knowledge and skill requirements that support success in occupations aligned with the pathway. Courses and training programs are typically outlined in career pathways that can guide students as they develop and maintain progress toward career goals. While clusters provide a broad picture of foundational skills, pathways can help students focus on specific occupations and develop clear, more informed educational plans.

Career Cluster	Career Pathway	Career Cluster	Career Pathway
 Agriculture, Food and Natural Resources	<ul style="list-style-type: none"> • Agribusiness Systems • Animal Systems • Environmental Service Systems • Food Products & Processing Systems • Natural Resources Systems • Plant Systems • Power, Structural & Technical Systems Architecture & Construction 	 Hospitality and Tourism	<ul style="list-style-type: none"> • Lodging • Recreation, Amusements & Attractions • Restaurants & Food/Beverage Services • Travel & Tourism
 Architecture and Construction	<ul style="list-style-type: none"> • Construction • Design/Pre-Construction • Maintenance/Operations 	 Human Services	<ul style="list-style-type: none"> • Consumer Services • Counseling & Mental Health Services • Early Childhood Development & Services • Family & Community Services • Personal Care Services
 Arts, Audio/Video Technology and Communications	<ul style="list-style-type: none"> • A/V Technology & Film • Journalism & Broadcasting • Performing Arts • Printing Technology • Telecommunications • Visual Arts 	 Information Technology	<ul style="list-style-type: none"> • Information Support & Services • Network Systems • Programming & Software Development • Web & Digital Communications
 Business, Management and Administration	<ul style="list-style-type: none"> • Administrative Support • Business Information Management • General Management • Human Resources Management • Operations Management 	 Law, Public Safety, Corrections and Security	<ul style="list-style-type: none"> • Correction Services • Emergency & Fire Management Services • Law Enforcement Services • Legal Services • Security & Protective Services
 Education and Training	<ul style="list-style-type: none"> • Administration & Administrative Support • Professional Support Services • Teaching/Training 	 Manufacturing	<ul style="list-style-type: none"> • Health, Safety & Environmental Assurance • Logistics & Inventory Control • Maintenance, Installation & Repair • Manufacturing Production Process Development • Production • Quality Assurance
 Finance	<ul style="list-style-type: none"> • Accounting • Banking Services • Business Finance • Insurance • Securities & Investments 	 Marketing, Sales and Service	<ul style="list-style-type: none"> • Marketing Communications • Marketing Management • Marketing Research • Merchandising • Professional Sales
 Government and Public Administration	<ul style="list-style-type: none"> • Foreign Service • Governance • National Security • Planning • Public Management & Administration • Regulation • Revenue & Taxation 	 Science Technology, Engineering and Mathematics	<ul style="list-style-type: none"> • Engineering & Technology • Science & Mathematics
 Health Science	<ul style="list-style-type: none"> • Biotechnology Research & Development • Diagnostic Services • Health Informatics • Support Services • Therapeutic Services 	 Transportation, Distribution and Logistics	<ul style="list-style-type: none"> • Facility & Mobile Equipment Maintenance • Health, Safety & Environmental Management • Logistics Planning & Management Services • Sales & Service • Transportation Operations • Transportation Systems/Infrastructure Planning, Management & Regulation • Warehousing & Distribution Center Operations

Find detailed descriptions of the knowledge and skills associated with career pathways at careertech.org/career-clusters

Programs of Study

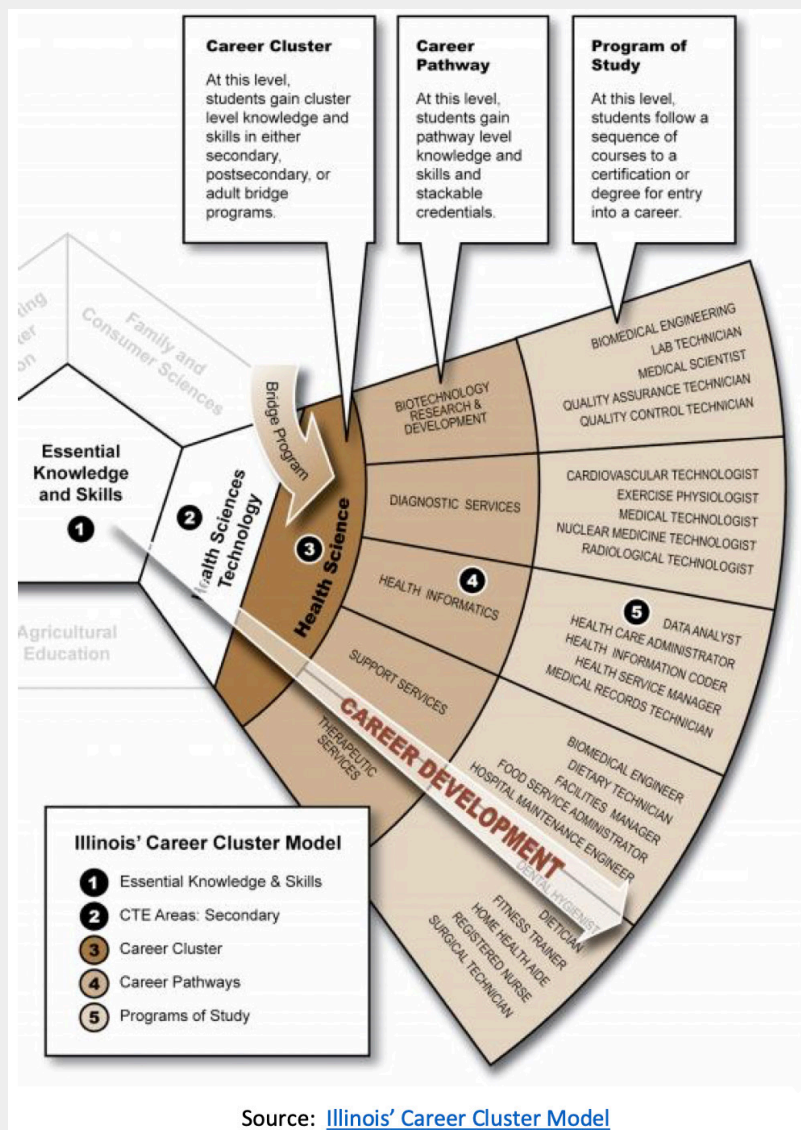
Programs of study are a critical component of career pathways. They provide a more focused and comprehensive outline of courses and trainings that lead to a specific career. Successful completion of a program of study typically results in certification or a degree that provides entry into a field of work. Where career pathways provide insight into various educational options and goals within a career field, programs of study target individual careers and specify the particular courses and trainings, as well as the sequence, needed to meet basic job requirements.

Detailed descriptions of various programs of study can be found [here](#).

How does it all fit together?

The organizational structure of the Career Clusters Framework moves from general to specific. Career clusters are the largest category, where jobs are classified according to foundational level knowledge and skills. Career pathways further delineate occupations within clusters by grouping jobs based on common courses and training programs. Finally, programs of study are more refined components of career pathways that focus on individual careers and specify the particular courses and sequences needed to obtain necessary certificates and/or degrees.

There are several career cluster models and diagrams available that illustrate the organizational structure of the Career Clusters Framework. One model that



Source: [Illinois' Career Cluster Model](#)

incorporates the major components of the framework is the Illinois' Career Cluster Model. This model effectively demonstrates the increasing specificity as transitions are made from clusters, to pathways, to programs of study.

Overall, the Career Clusters Framework provides a basis for understanding the fundamental knowledge and skills required for various careers. This can facilitate a more direct alignment between educational program offerings and occupational opportunities.

Helpful Resources

Several online resources are available that provide detailed descriptions of individual career clusters and pathways. Below is a list of government and state guides that can assist in further exploration of career clusters and their use.

Bureau of Labor Statistics

<https://www.bls.gov/careeroutlook/2015/article/career-clusters.htm>

O*NET Browse by Career Cluster

<https://www.onetonline.org/find/career>

North Carolina Career Clusters Guide

<https://www.nccareers.org/careerguide/index.html>

https://www.nccareers.org/careerguide/print/Career_Clusters_Guide_2018.pdf

Nebraska Career Education Model and Resources

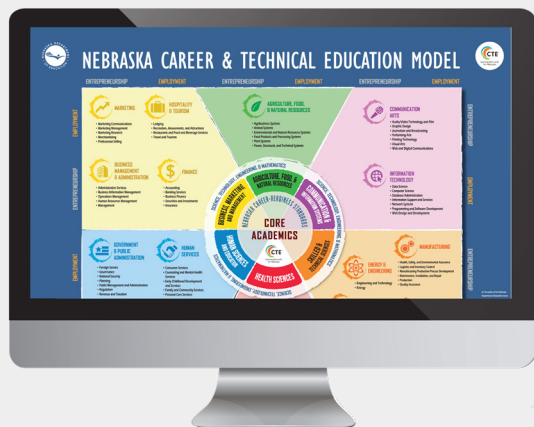
<https://www.education.ne.gov/nce/career-clusters/>

Illinois Career Clusters, Pathways, and Programs of Study Guide

https://occl.illinois.edu/docs/librariesprovider4/prc/career-cluster-guide.pdf?sfvrsn=24b9bc89_6

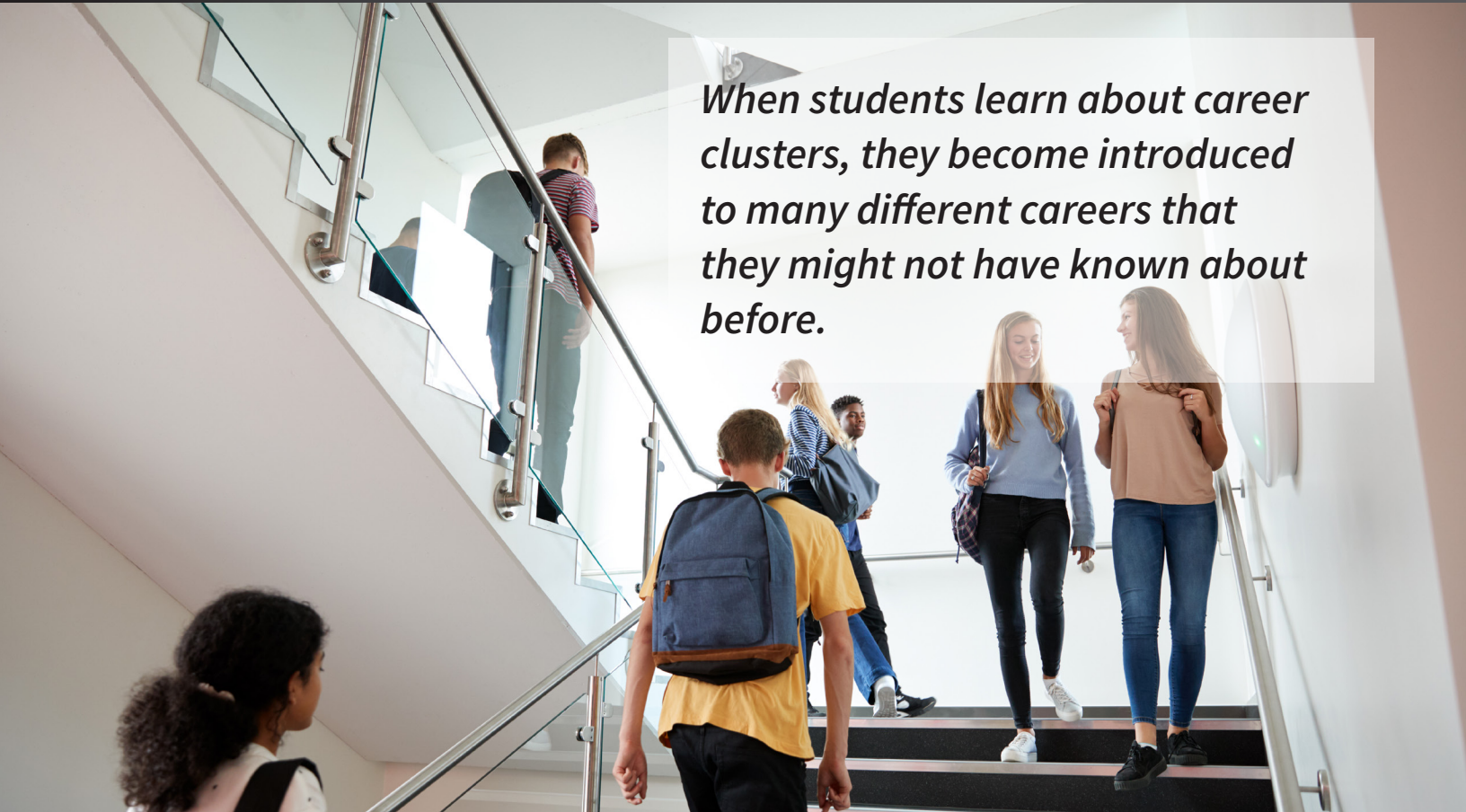
Minnesota State CAREERwise Education

<https://careerwise.minnstate.edu/careers/clusters.html>



OUR COMMITMENT

Through our commitment to drive results, our partnerships have led us to building comprehensive career and college education solutions. We focus on solutions relevant to education practices and ensure a seamless approach to support career readiness efforts in schools everywhere. Our innovative approach focuses on delivering the best possible solutions to support long-term student success.

A photograph of several students walking on a modern school staircase. The students are diverse in age and ethnicity. Some are carrying backpacks. The staircase has glass railings and a clean, bright environment.

When students learn about career clusters, they become introduced to many different careers that they might not have known about before.

Contact Us

200 East Broadway, Suite 215
Maryville, TN 37804

hello@ns4ed.com
www.pathway2careers.com

